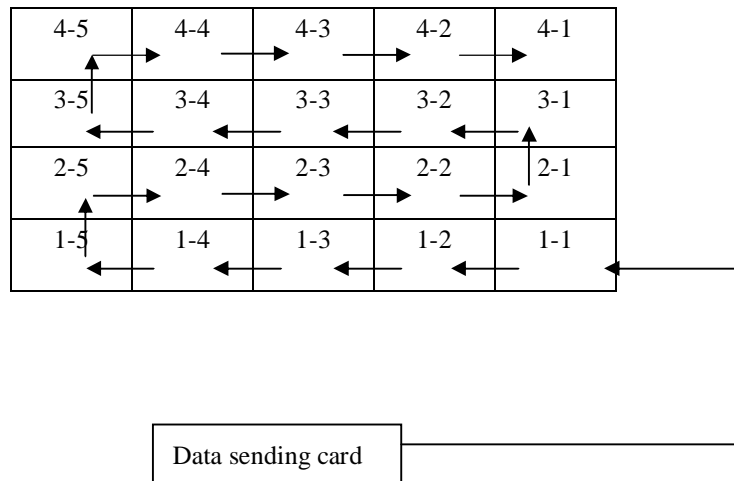


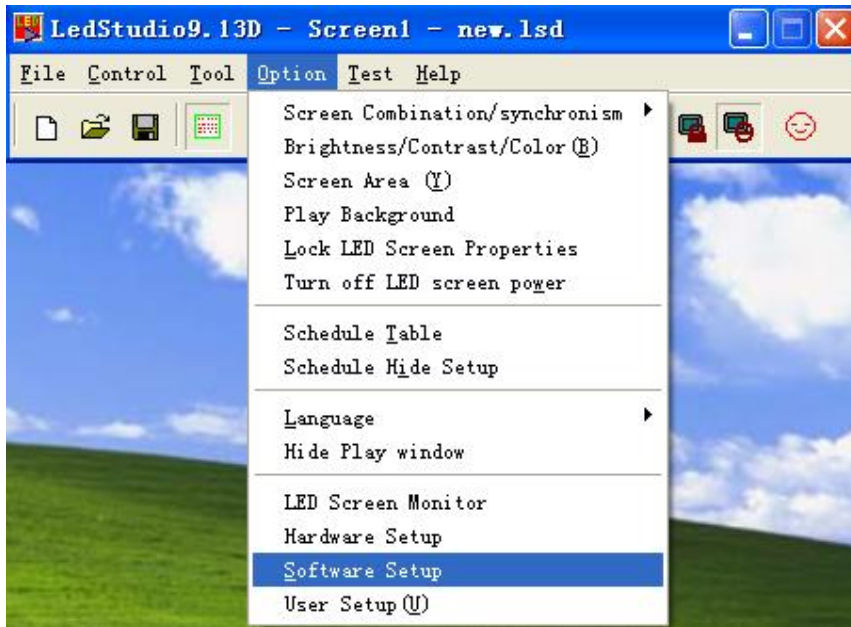
Display connection

Sketch map of net-line between LED display cabinets.(From front side view)

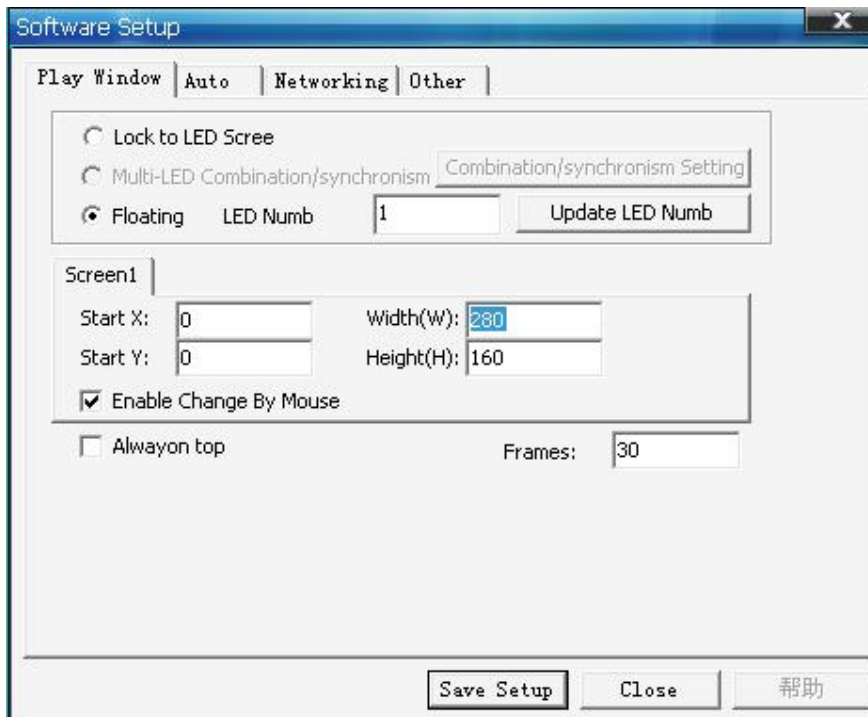




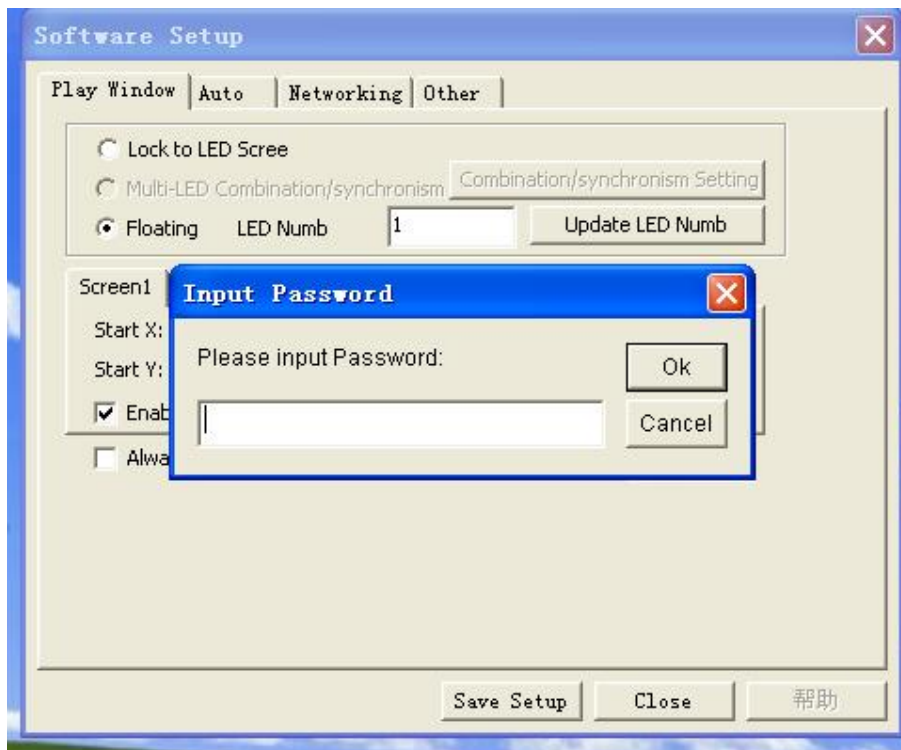
Please open LEDstudio software, then select "option", click "software setup".



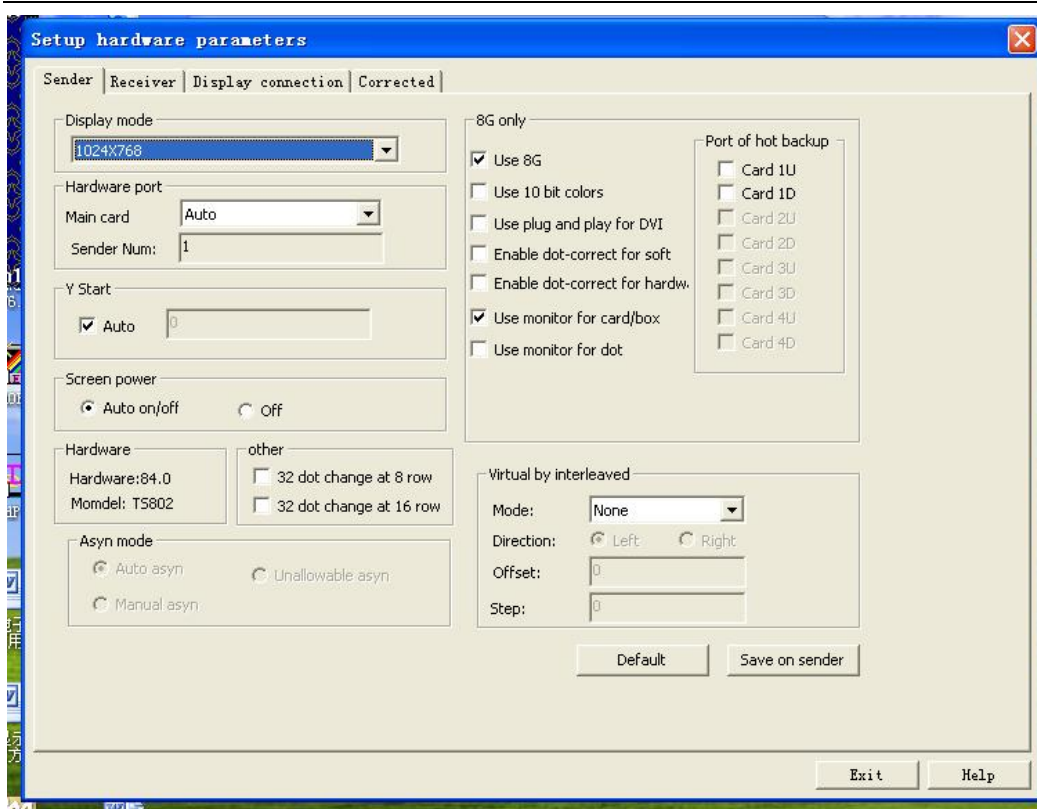
Please put lowercase letters "linsn".

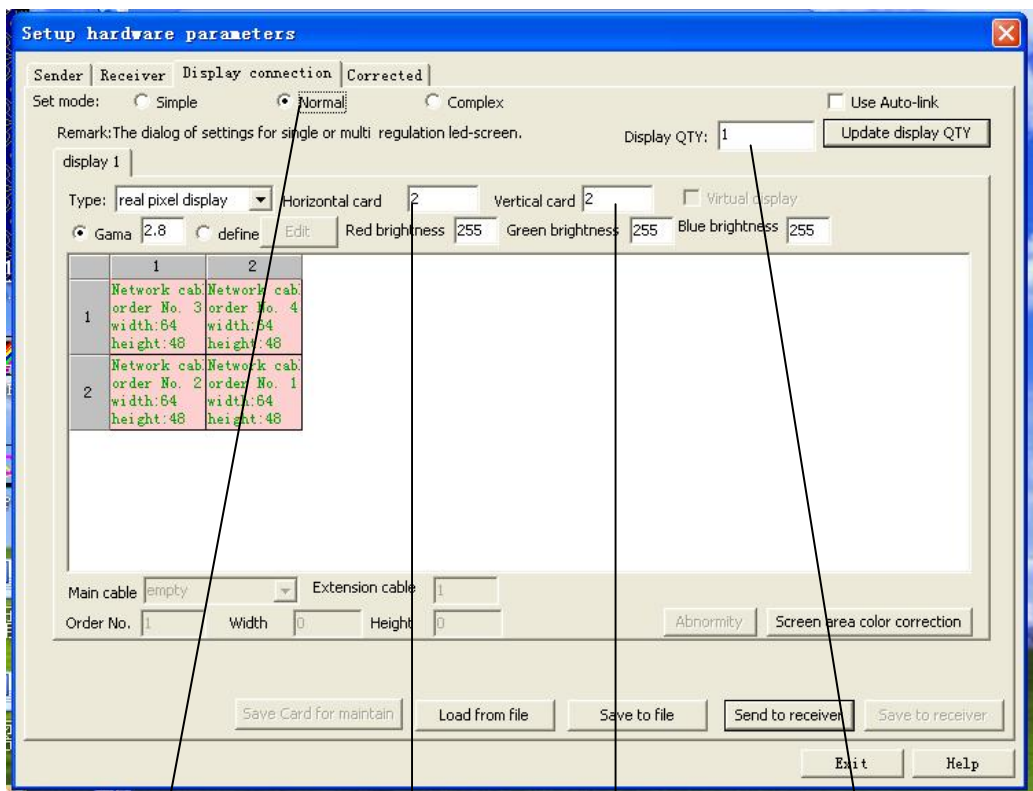


Please enter password "168".



Please select "display connection".

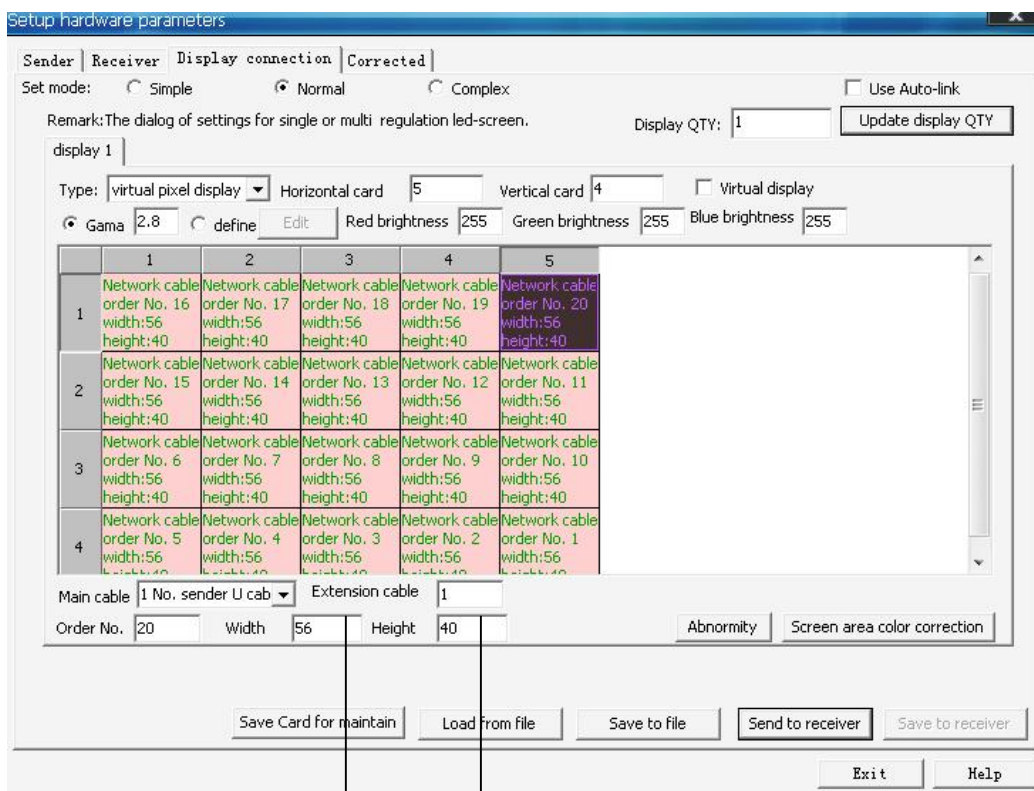




Choose Normal

Please input receiving card quantity

Input "1", then click Update display QTY



adjust receiving card loading pixels

Click "send to receiver" button, then "save to receiver".