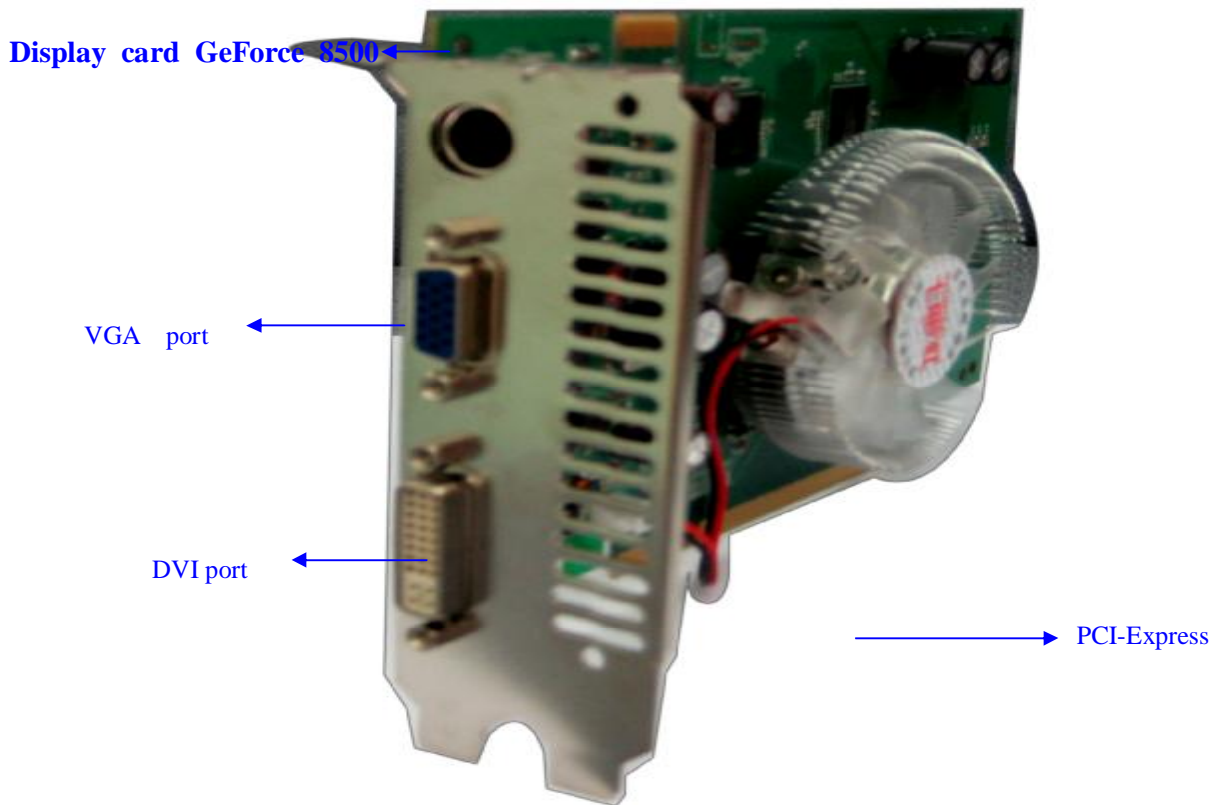


Control system install illustration

0. Desktop PC setting

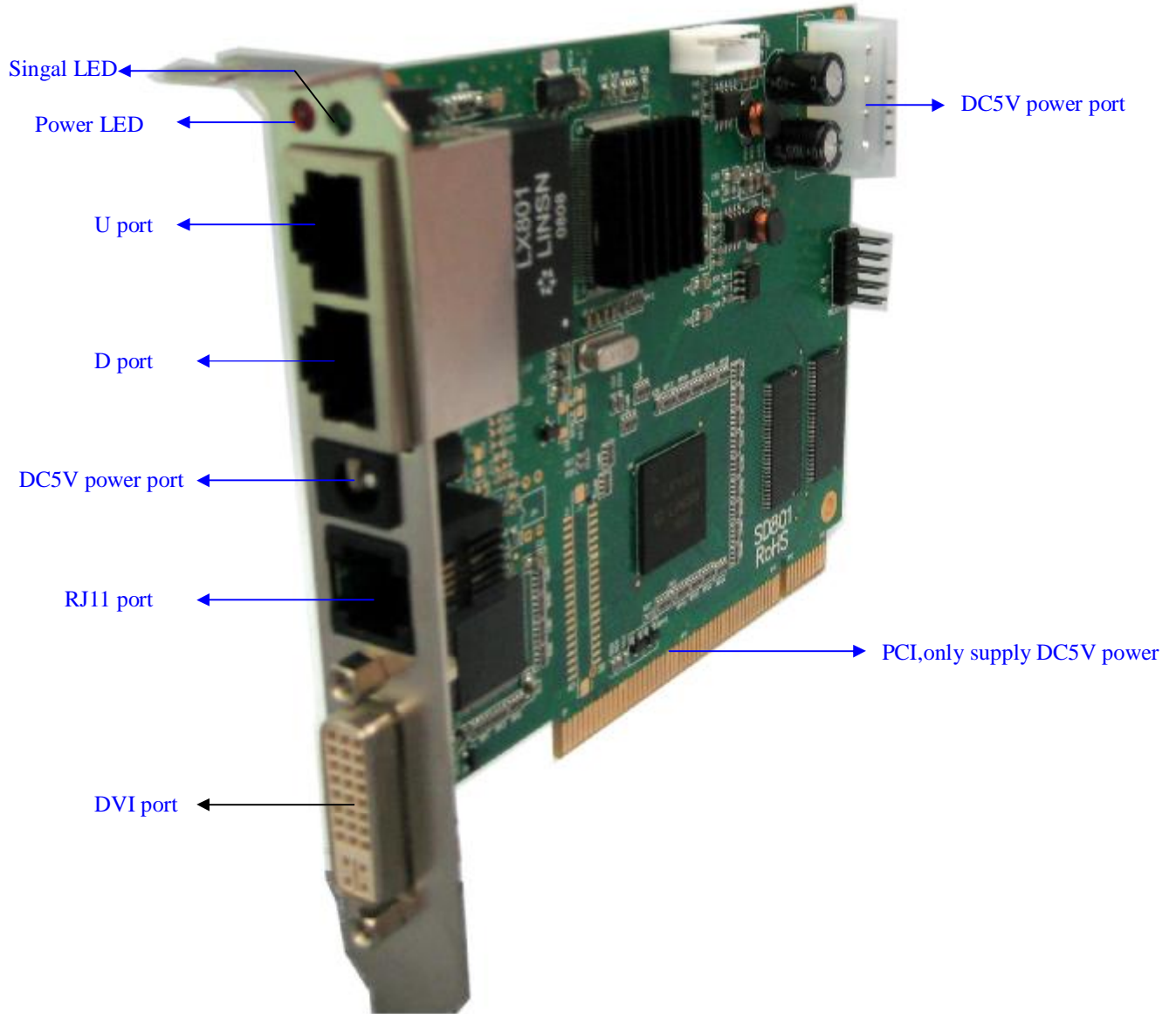
The control desktop PC must have a **PCI-E socket**, **More than 2 PCI sockets**, **one COM port**.

1. Control system introduce and connection.



1-1 Display card

Our display card has to be installed in PCI-E socket.



1-2 Sending card

Our sending card has to be installed in the PCI socket.





RS232 connect to the PC
COM port, RJ11 connect to
the sending card

DVI line connect
display card with
sending card

DVI cable must connect with both sending card and display card.

COM cable connect with sending card and PC mainboard.(RS232 connect to the
PC COM port, RJ11 connect to the sending card.)

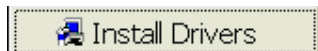


Use network cable connect with sending card and receiving card



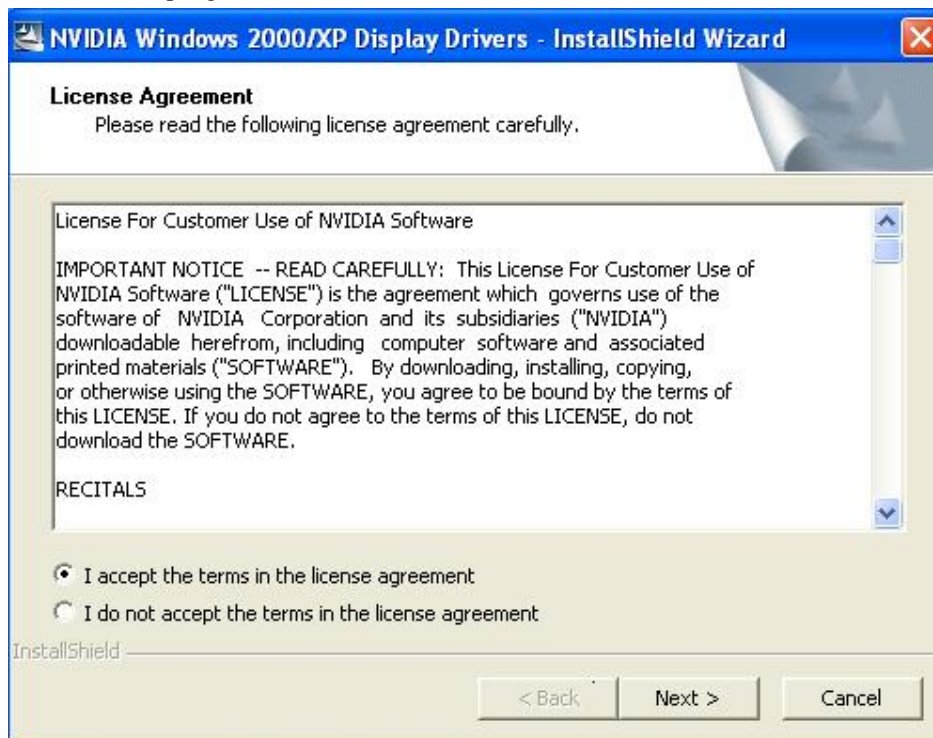
2.install Display card driver and setup


1.please put the "COLORFUL GRAPHICS CARD DRIVER" CD disk in CD-ROM, then appear screen automatic.Or browse the CD and find the setup driver file to install.

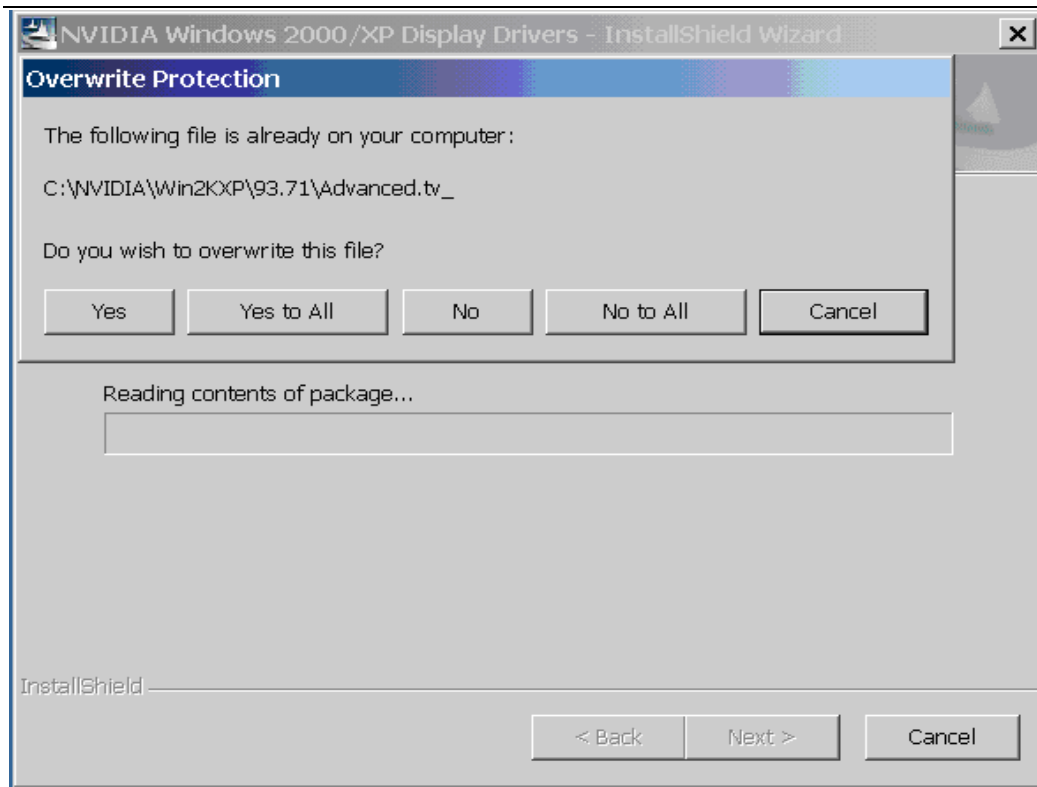




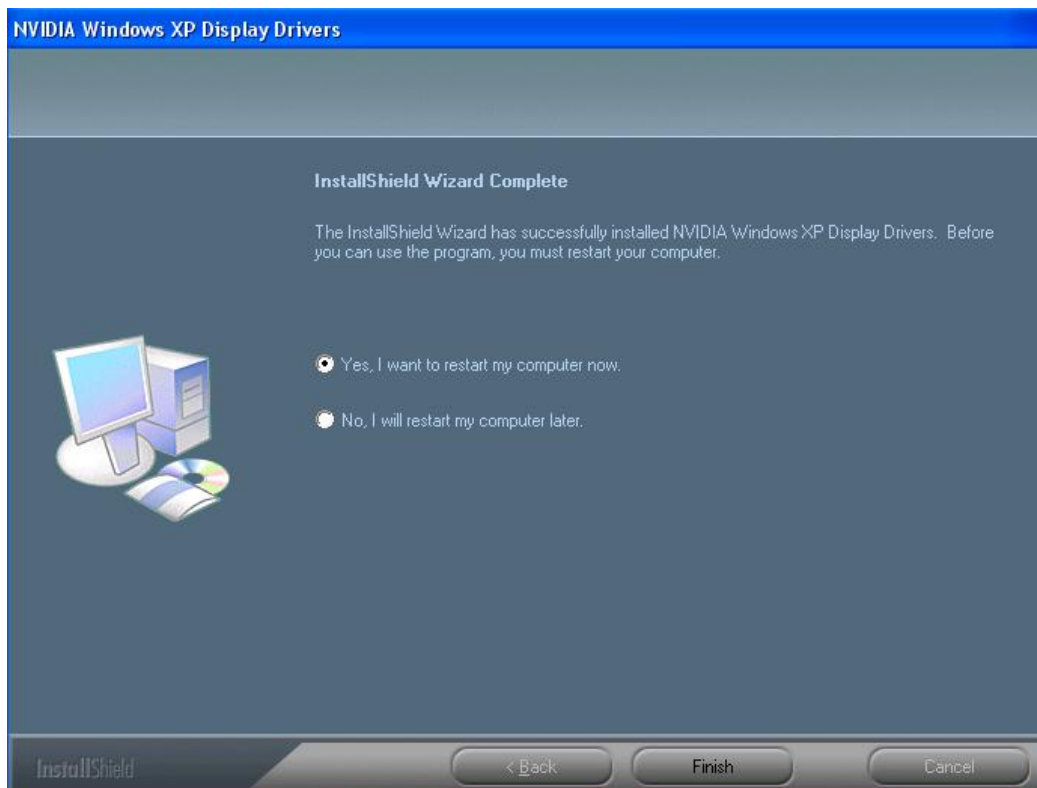
2. Select accept agreement ,then click “NEXT” button.



3. Click “NEXT” ,select 

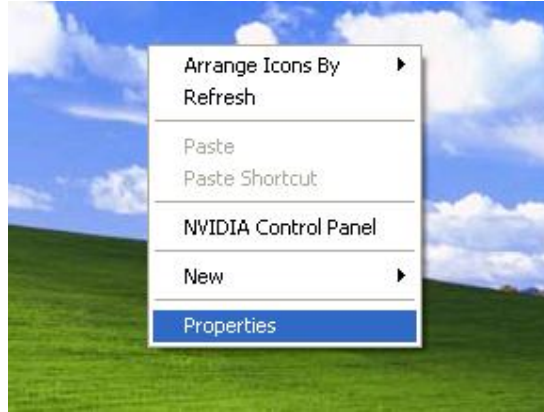


4. When Display card driver installed, restart the PC.

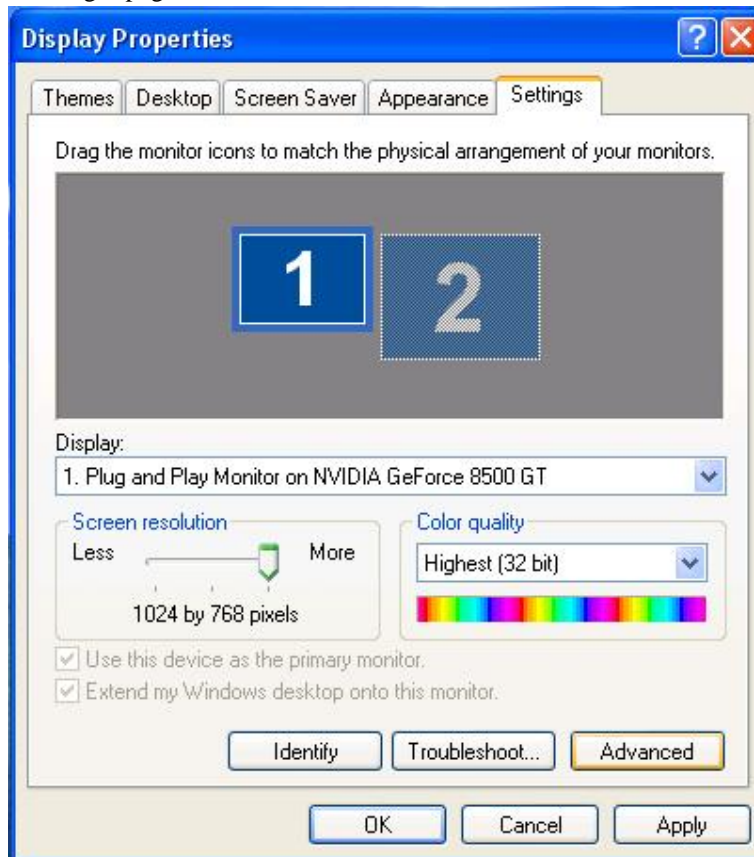


3. Setup Display card properties

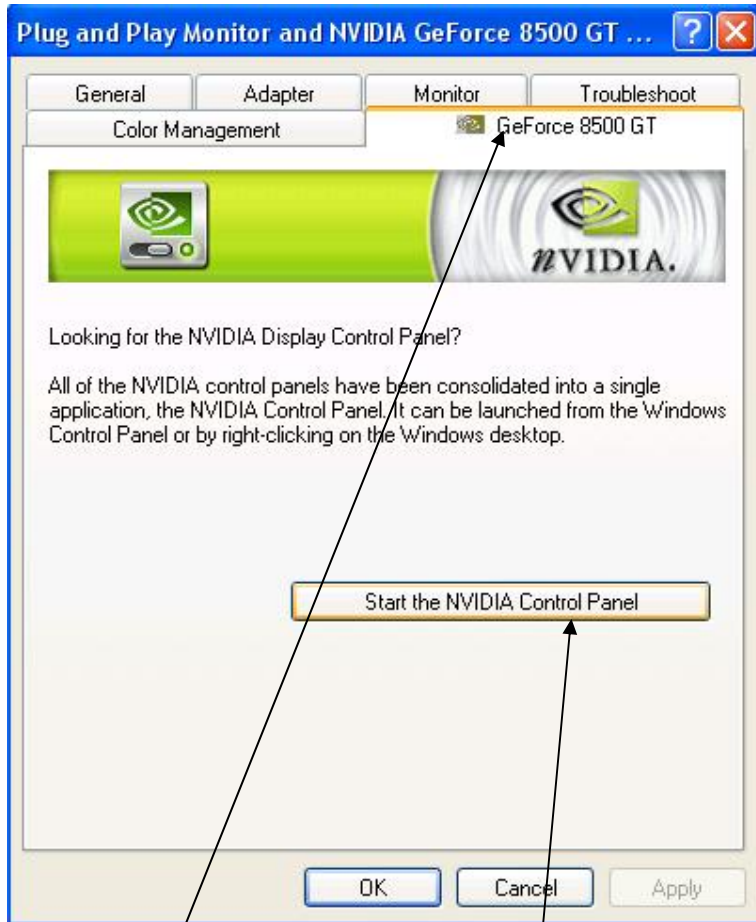
1. Right click on the space of the desktop, select “properties”



2. Select” “Settings” page, then select “Advanced” button.

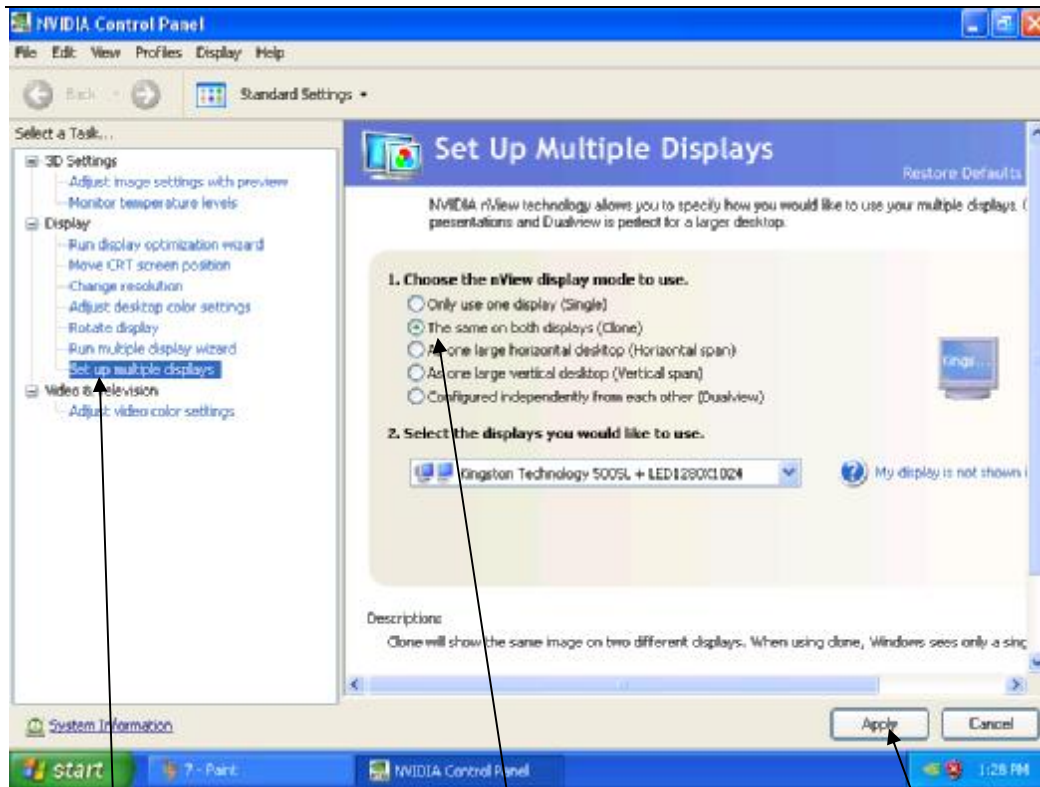


3. select "GeForce 8500 GT" button.



Select GeForce 8500 GT page

Click on Start the NVIDIA Control Panel



select Set up multi monitors

nView display mode select the same on both displays

click "Apply", then select "Yes".

When finish this step, the Single LED of Sending card is flashing (the green one).